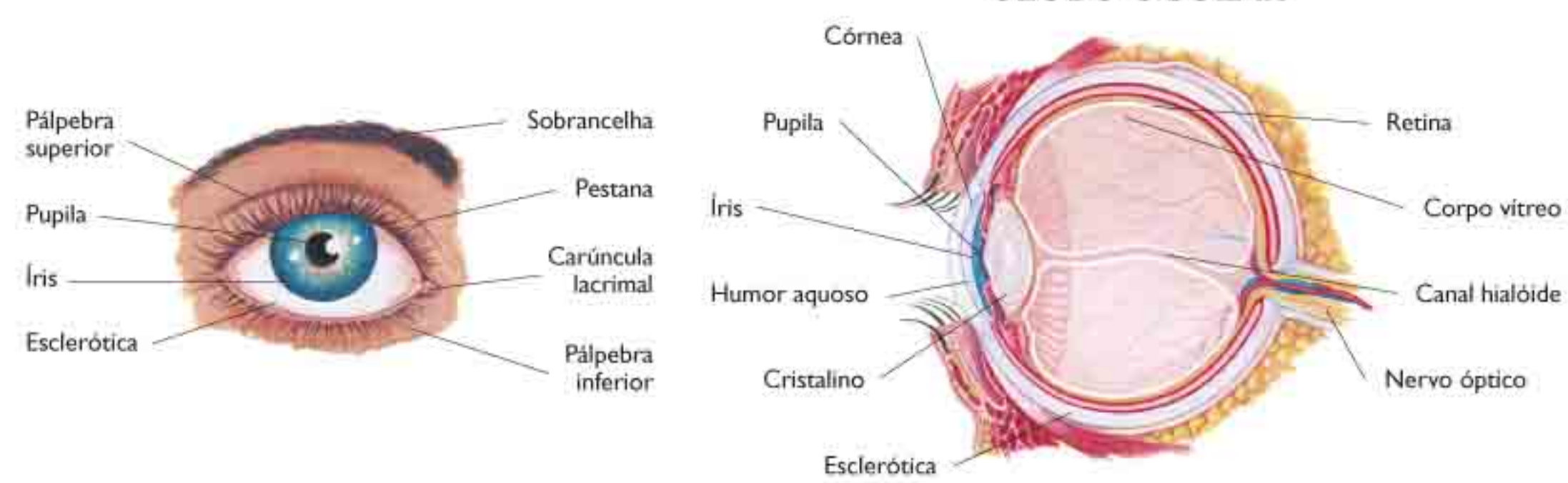


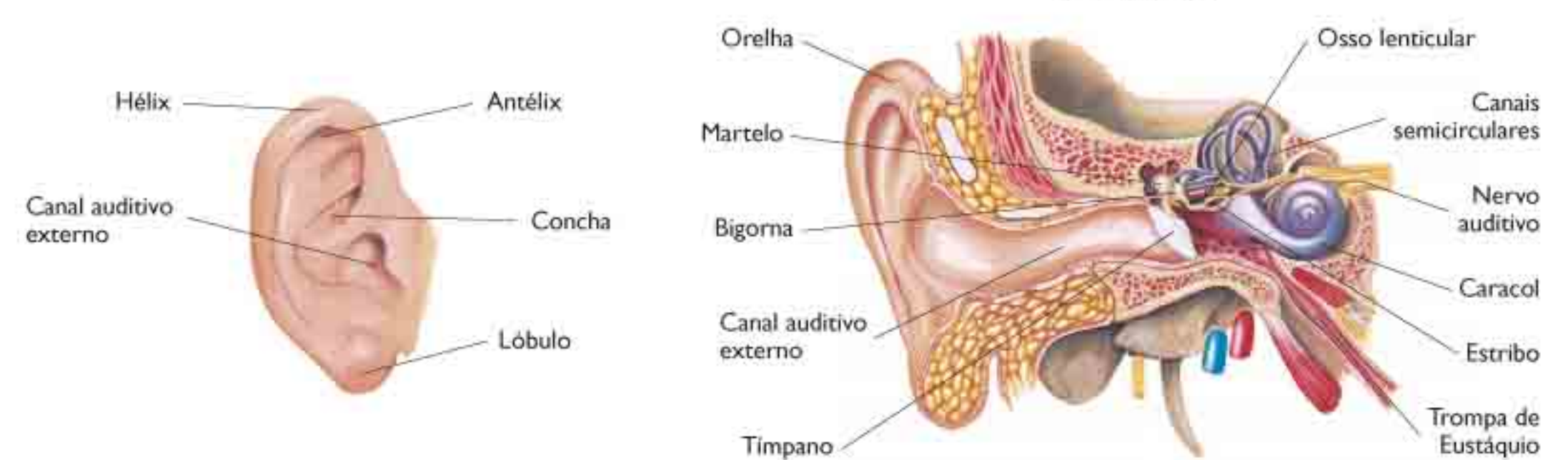
VISÃO

GLOBO OCULAR



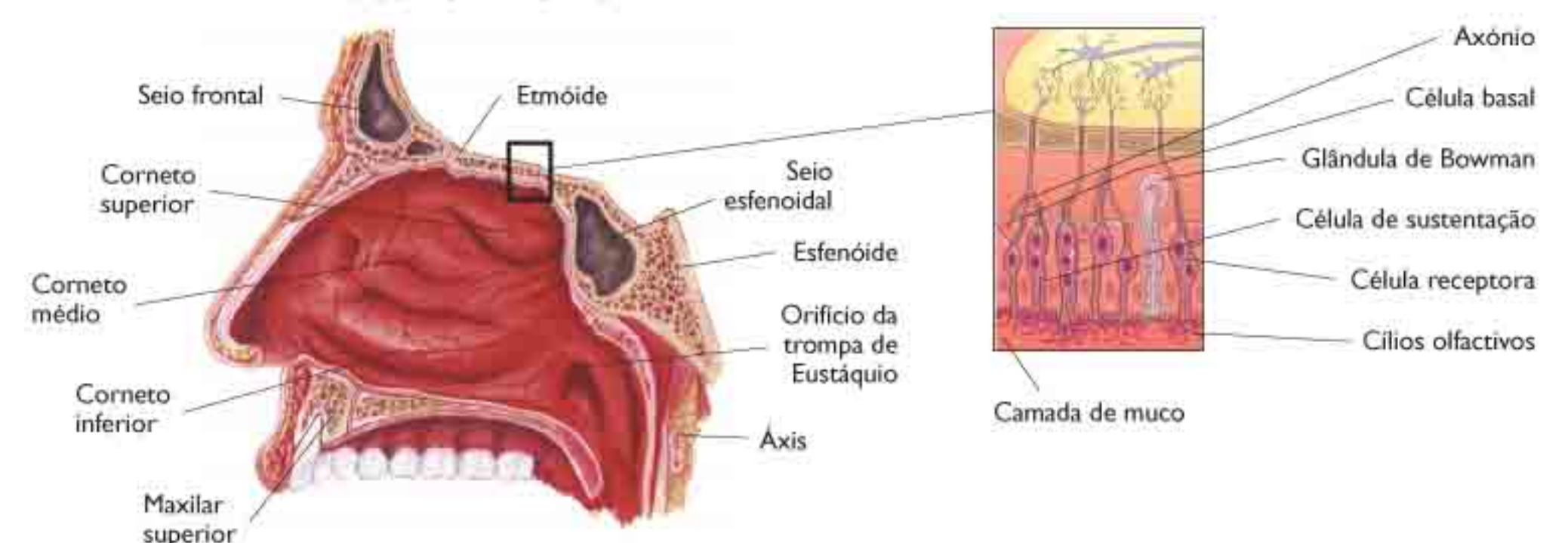
AUDIÇÃO

OUVIDO

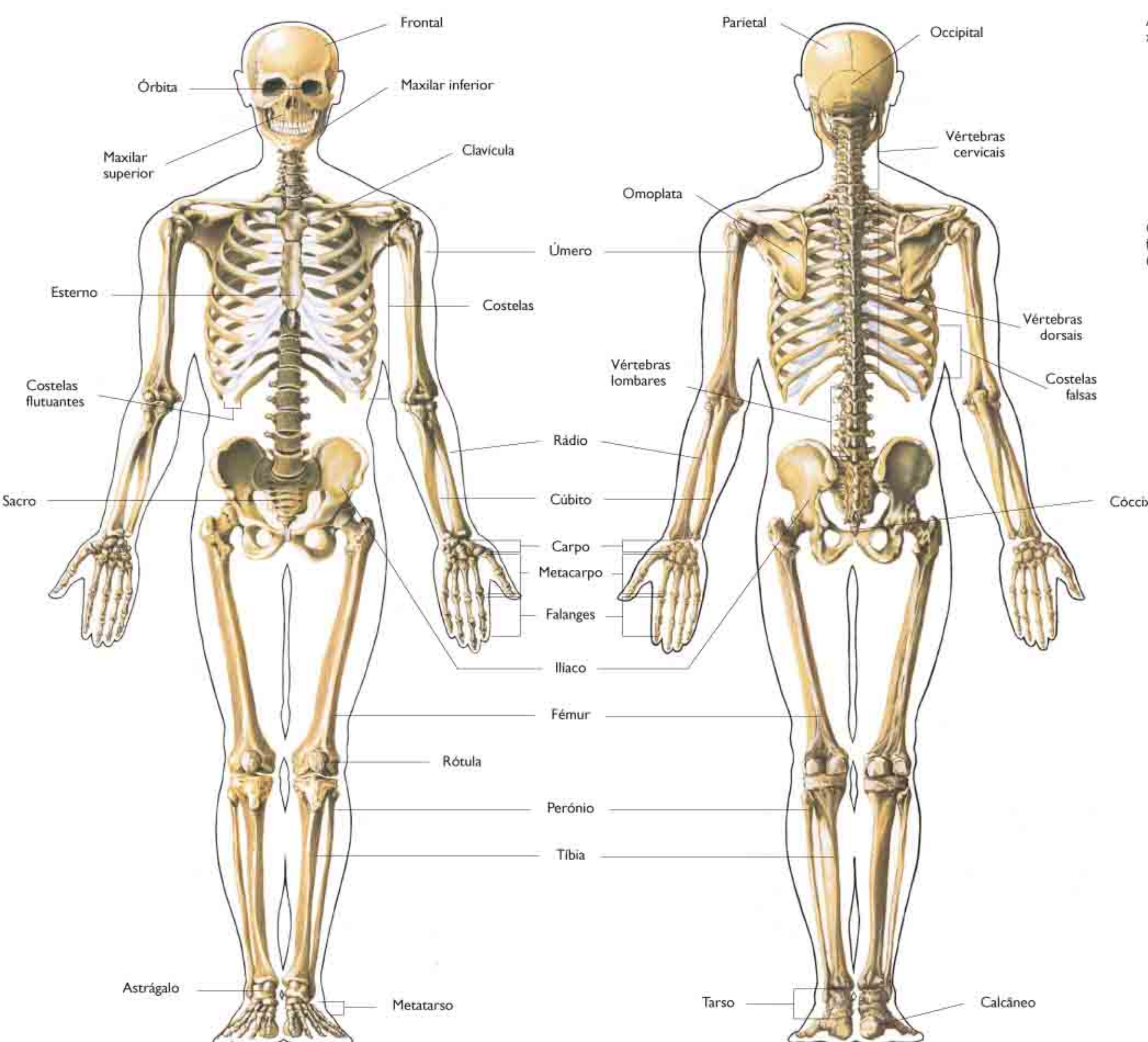


OLFACTO

FOSSAS NASAIS



ESQUELETO



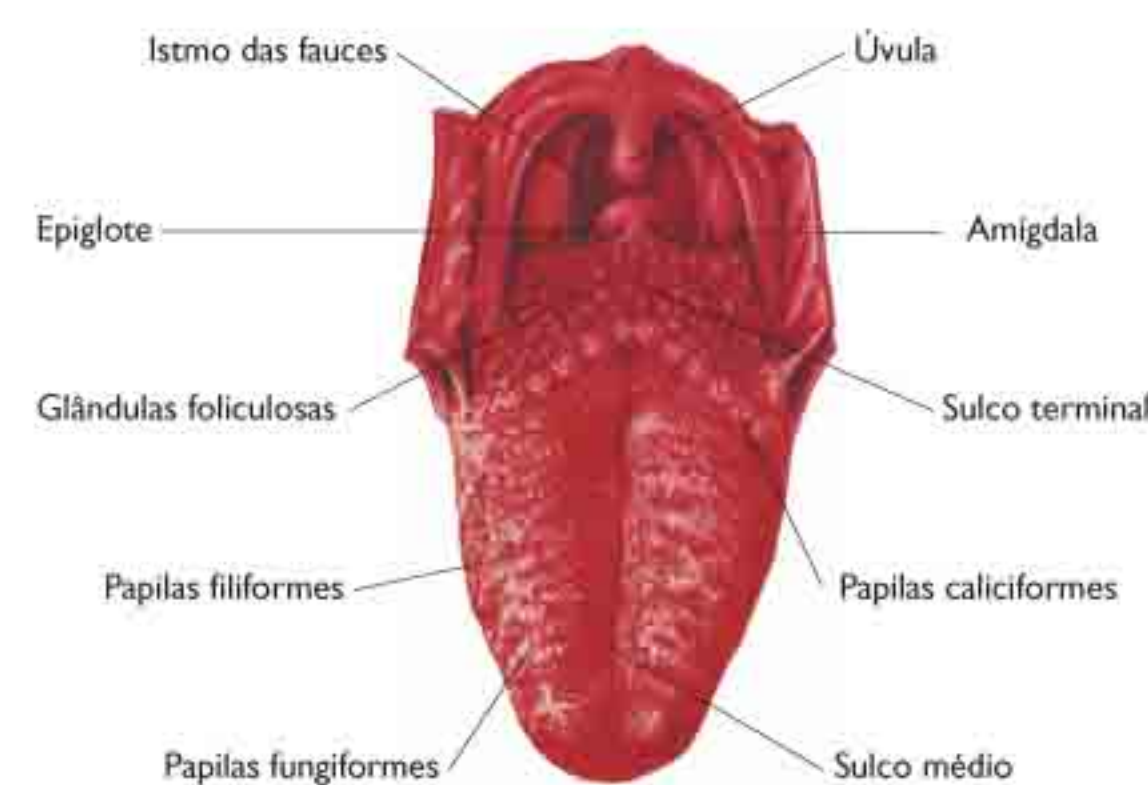
TACTO

PELE

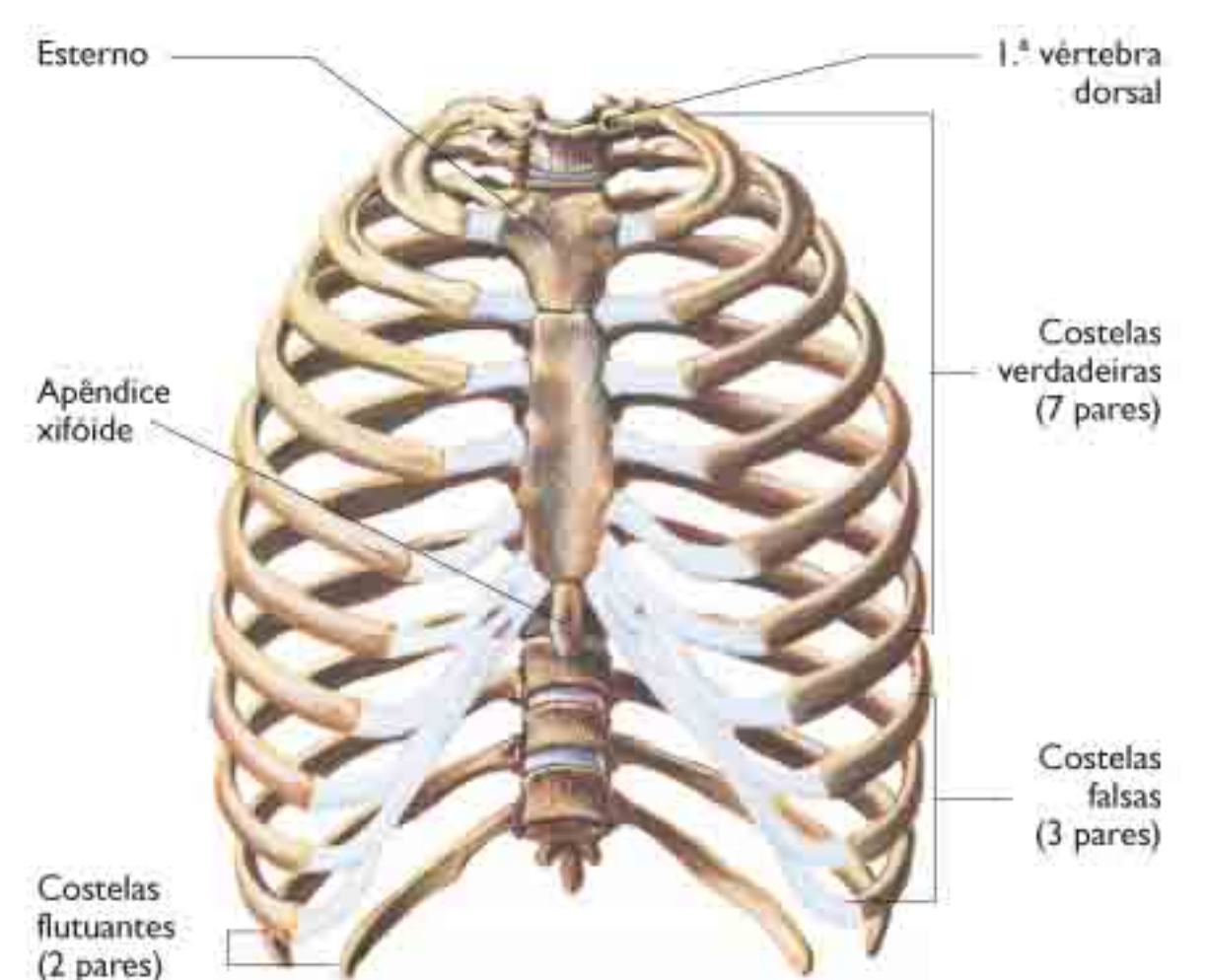


PALADAR

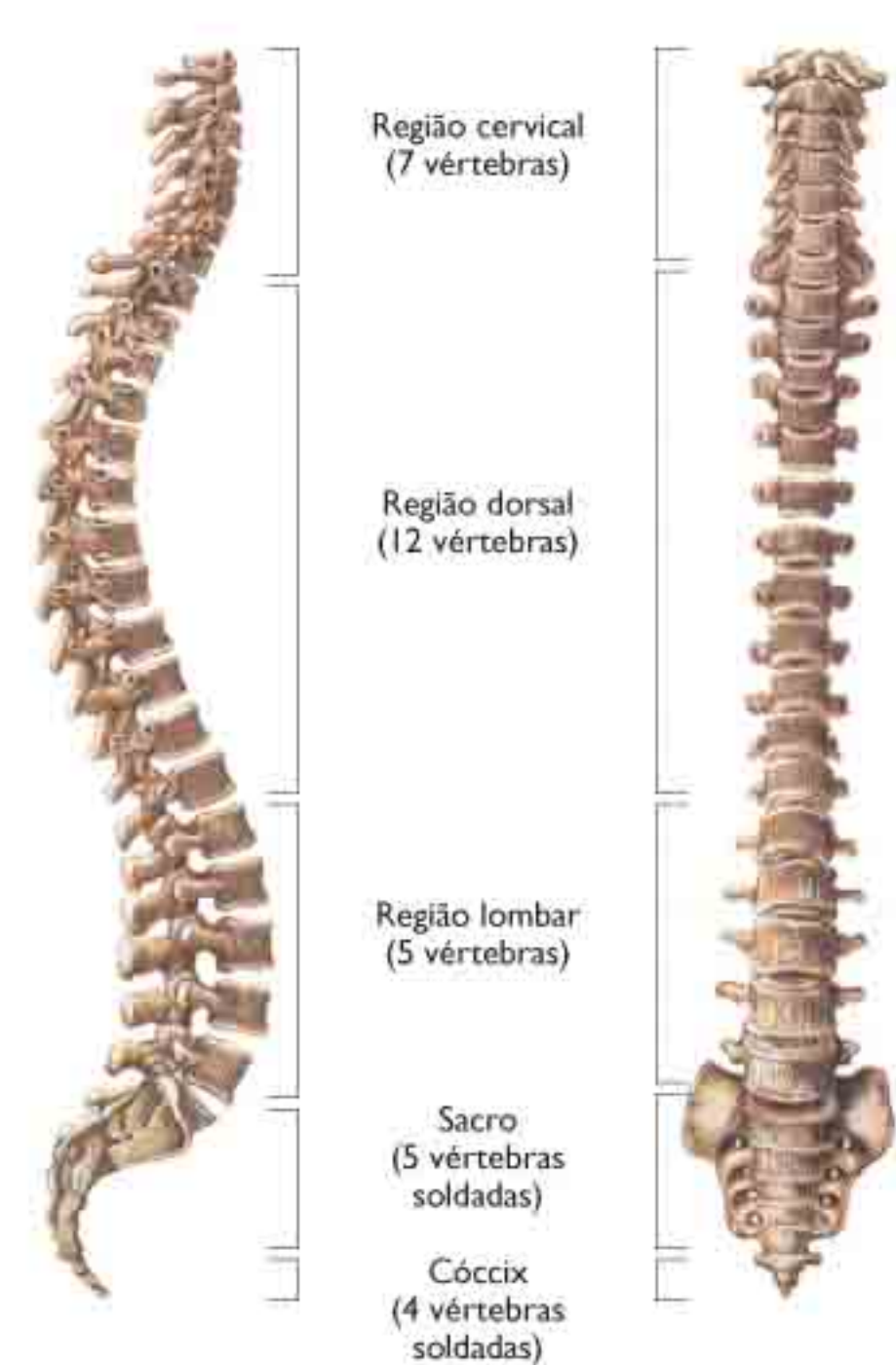
LÍNGUA



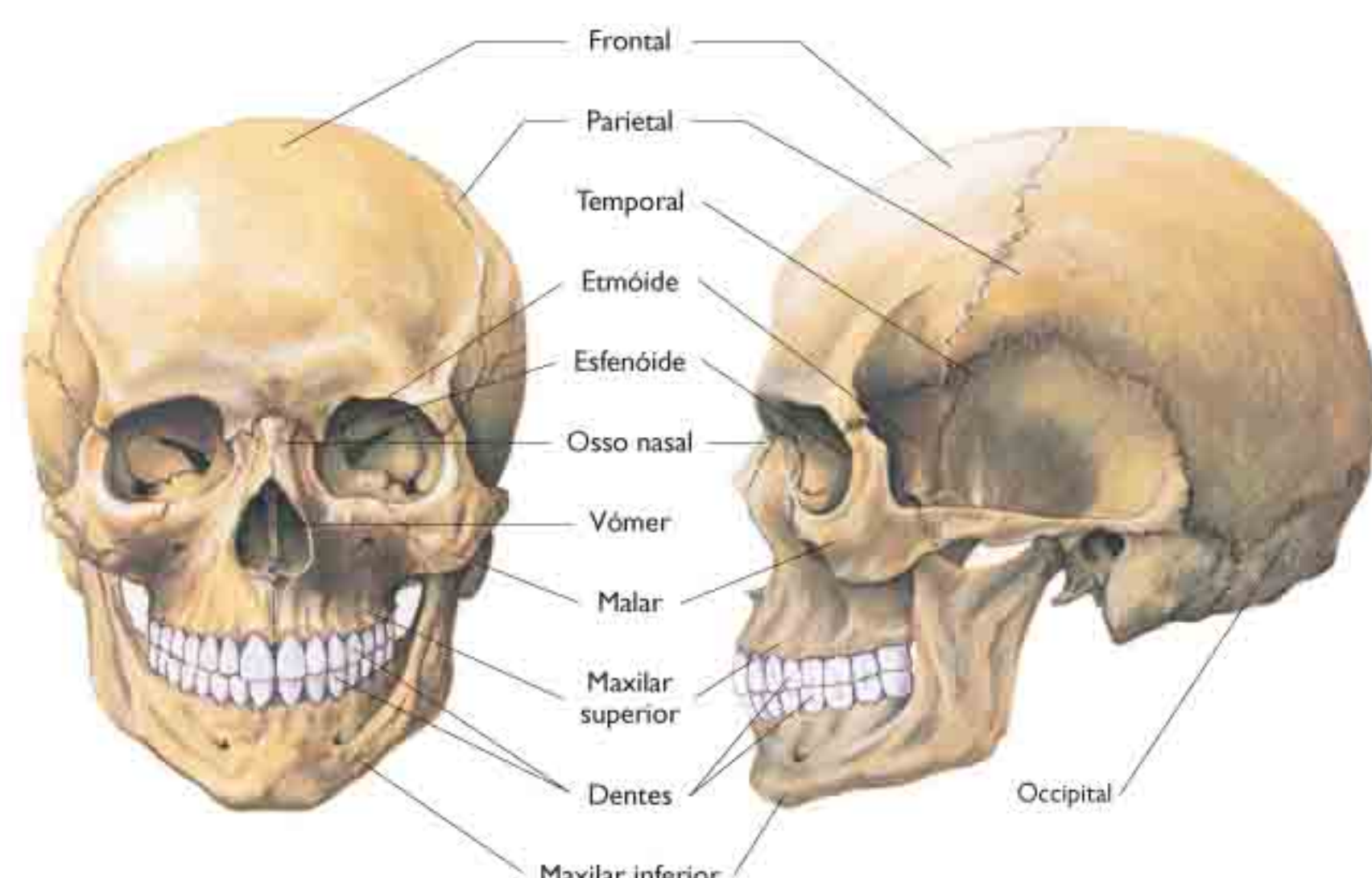
A CAIXA TORÁCICA



COLUNA VERTEBRAL

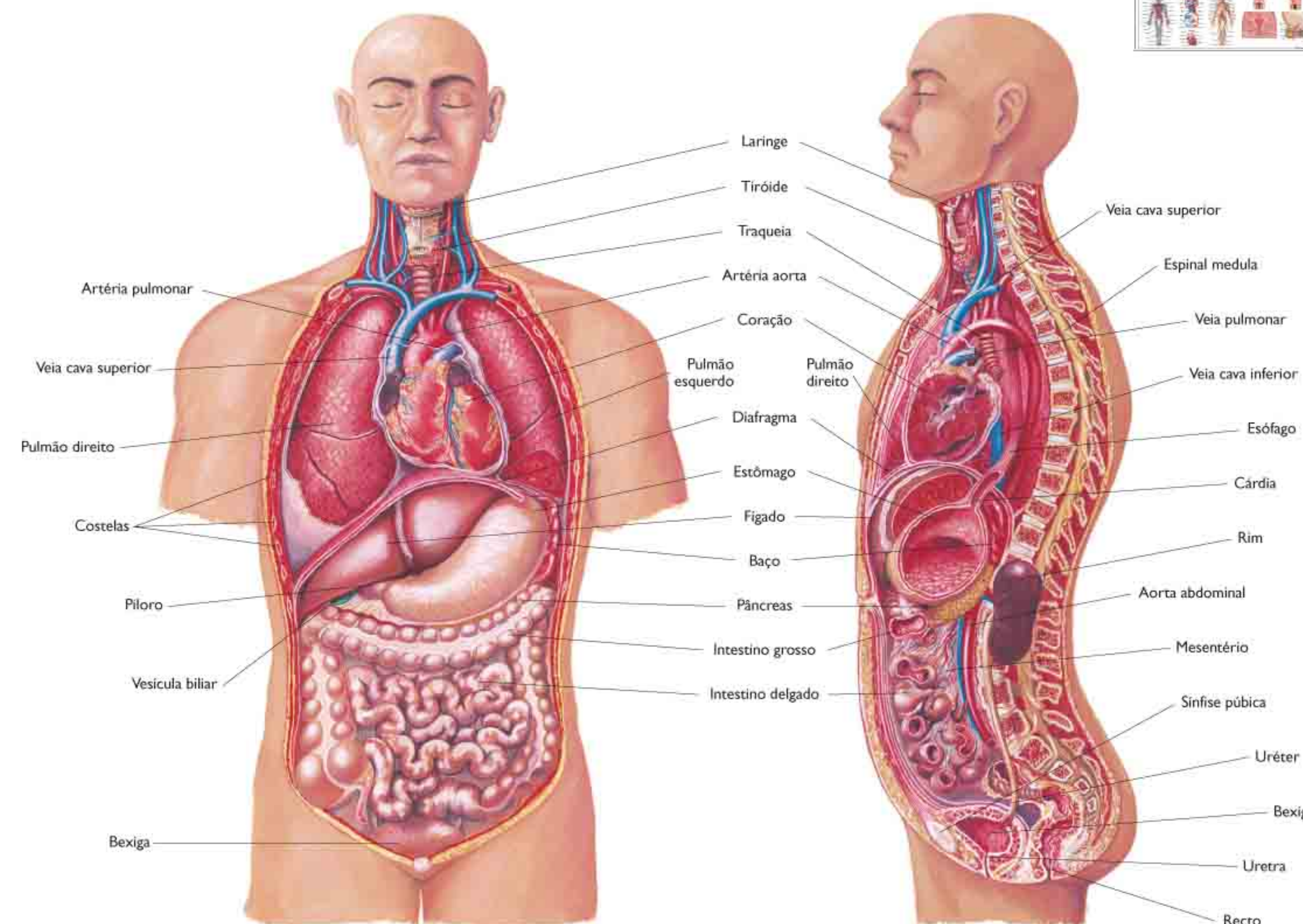


OSSOS DA CABEÇA (crânio e face)



PRINCIPAIS ÓRGÃOS INTERNOS (cortes esquemáticos)

No verso:



MÚSCULOS

